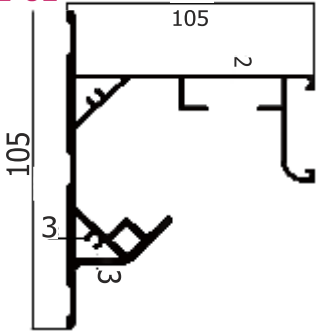




İ-SKP-762

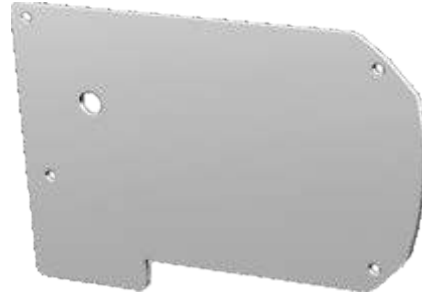
İ-762-01



Ağırlık/Weight: 3,390 Kg/M
Alüminyum/Aluminium

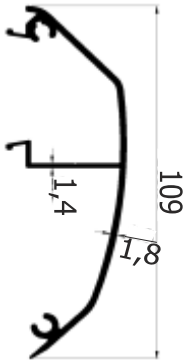
İ-SKP-30-1 Sol/Left

İ-SKP-30 Sağ/Right



İnox / Stainless Steel

İ-762-02



Ağırlık/Weight: 0,965 Kg/M
Alüminyum/Aluminium

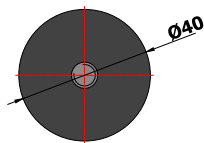
İ-762-P-1



Ağırlık/Weight: 9,5 gr.

Material : Delrin

İ-SKP- RP32



Kauçuk
Rubber

